

## Glendale Drive Wimbledon, SW19 7BG

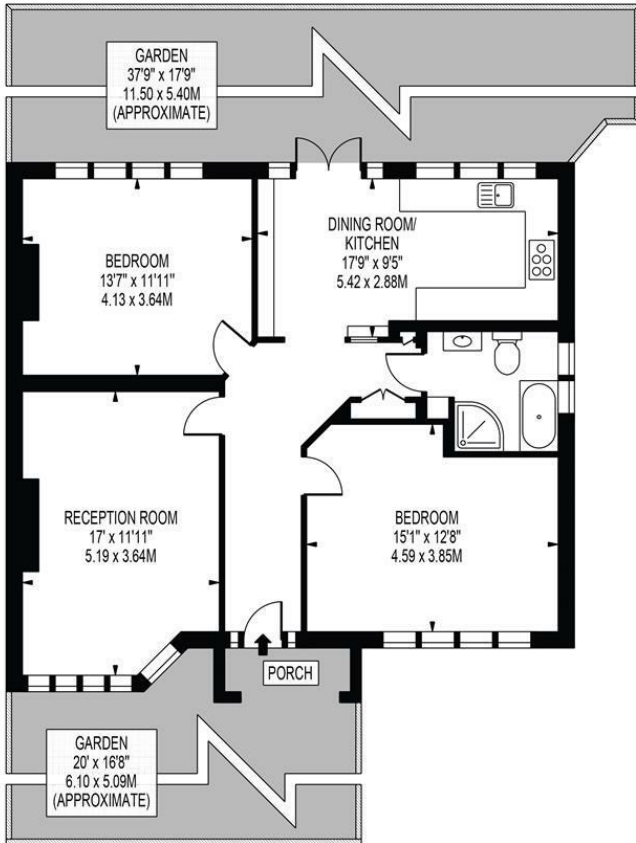
**Offers In Excess Of £720,000 Leasehold - Share of Freehold**



**A "must see"! Arranged over the ground floor and finished to a wonderful specification throughout this spacious, two double bedroom, purpose-built maisonette with a South-Westerly facing garden is superbly located on this quiet sought after road close to Wimbledon Village as well as Wimbledon town centre and mainline station. A well proportioned and spacious property boasting a private entrance that opens into a large entrance hall with rooms leading off. The sunny kitchen/breakfast room has doors that lead out to a fabulous private garden with patio area and secure side access with ample storage. As well as share of freehold there is the added benefit of no onward chain.**

## GLENDALE DRIVE

APPROXIMATE GROSS INTERNAL FLOOR AREA: 897 SQ FT - 83.34 SQ M



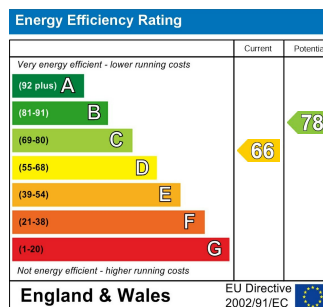
### GROUND FLOOR

FOR ILLUSTRATION PURPOSES ONLY

THIS FLOOR PLAN SHOULD BE USED AS A GENERAL OUTLINE FOR GUIDANCE ONLY AND DOES NOT CONSTITUTE IN WHOLE OR IN PART AN OFFER OR CONTRACT. ANY INTENDING PURCHASER OR LESSEE SHOULD SATISFY THEMSELVES BY INSPECTION, SEARCHES, ENQUIRIES AND FULL SURVEY AS TO THE CORRECTNESS OF EACH STATEMENT. ANY AREAS, MEASUREMENTS OR DISTANCES QUOTED ARE APPROXIMATE AND SHOULD NOT BE USED TO VALUE A PROPERTY OR BE THE BASIS OF ANY SALE OR LET.



- Purpose-Built Maisonette
- Two Double Bedrooms
- Kitchen / Breakfast Room
- Wonderful Family Bathroom
- Fantastic Sense Of Space Throughout
- Large Private South-Westerly Facing Garden
- Side Access With Ample Storage
- Share Of Freehold (No Ground Rent & No Annual Service Charge)
- EPC Rating D
- Council Tax Band E



For Free Mortgage Quote and Best Mortgage Rates, call an Ellisons Mortgage Advisor on 020 8944 9494



Although these particulars are believed to be correct, their accuracy is not guaranteed and they do not form part of any contract.

Celebrating 30 years of successful Sales and Lettings in Merton

